

540 W WEBSTER AVENUE 612
LINCOLN PARK

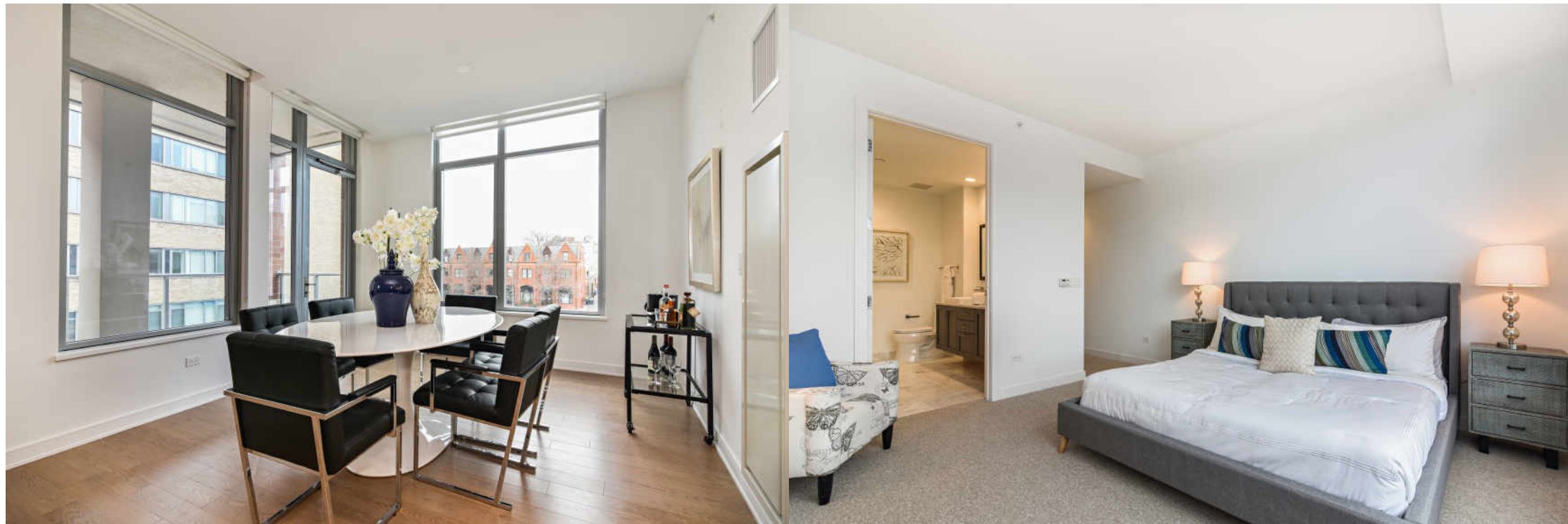


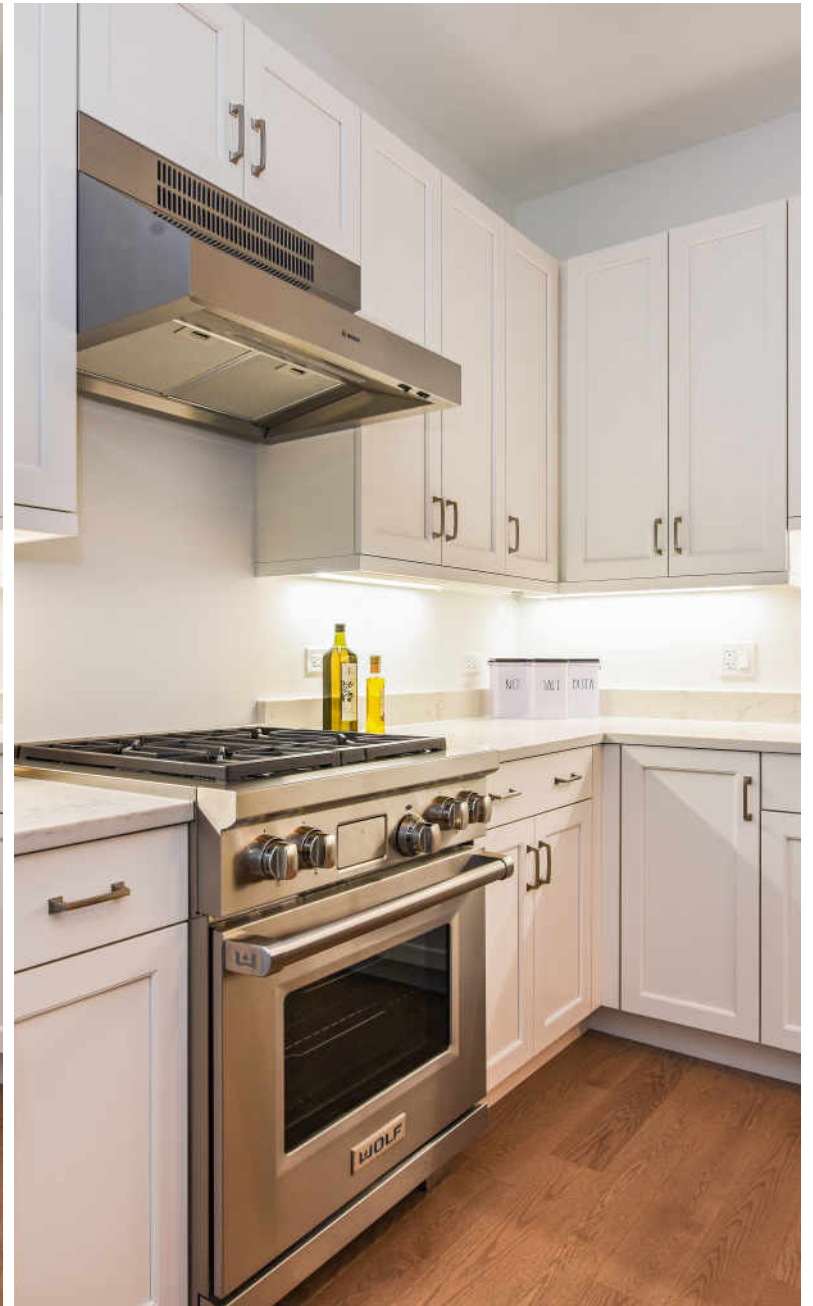
@properties®



Developer Closeout! New prices and Welcome home credits for 1 and 2 bedroom units. Bring your pickiest buyers to Webster Square. Lincoln Park's only full amenity new construction condo building with immediate deliveries. Variety of spacious 1BR, 2BR, and 3BR floorplans available with: 9'+ ceilings, Sub Zero, Wolf & Bosch appliances, Woodmode/Brookhaven cabinets and Grohe and Kohler bath fixtures. Private balconies and over-sized windows offer views of the skyline, park, lake and surrounding neighborhood. All in a beautifully appointed full amenity building including 24 hour doorman, fully equipped fitness center, club & party room, business center, rooftop deck with dynamic lake and city views, prvt landscaped 1/2 acre park, bike room and garage parking. Heart of Lincoln Park location across from Oz Park. Move in now or personalize with designer selections. Join the many homeowners already living in this vibrant new building. Sales office and model unit located on site at 540 W. Webster.









ANNE PROPER

ANNEPROPER.COM

(312) 576-1234

ANNEPROPER@ATPROPERTIES.COM

AVAILABLE 24/7 CALL ME ANYTIME!

@properties[®]

540WEBSTER612.INFO